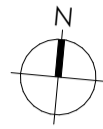


WohnPark Dangelbachmatte, Malters

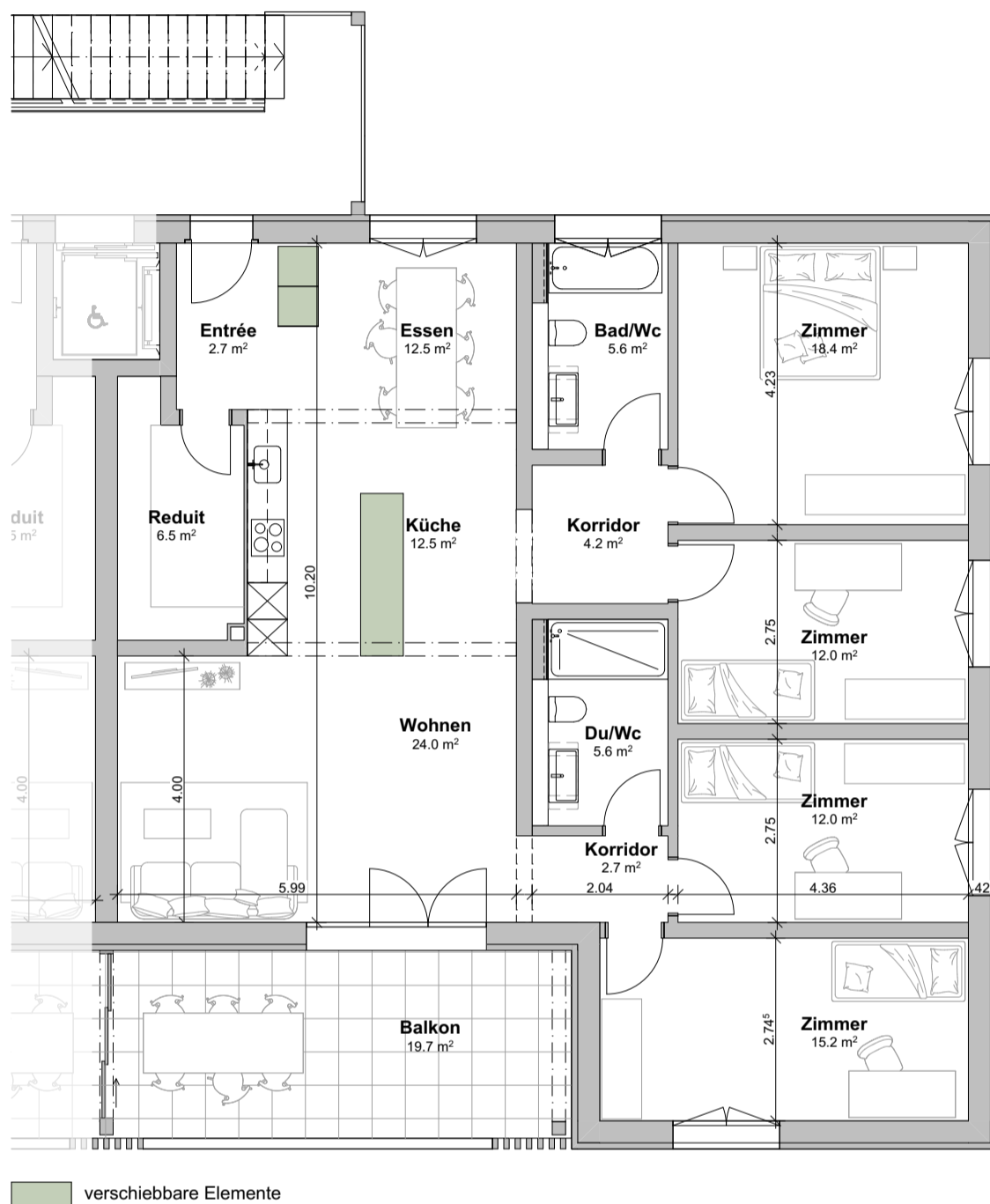
Wohnungsnummer G.1.2

Geschoss : 1. Obergeschoss

Masstab: 1:100



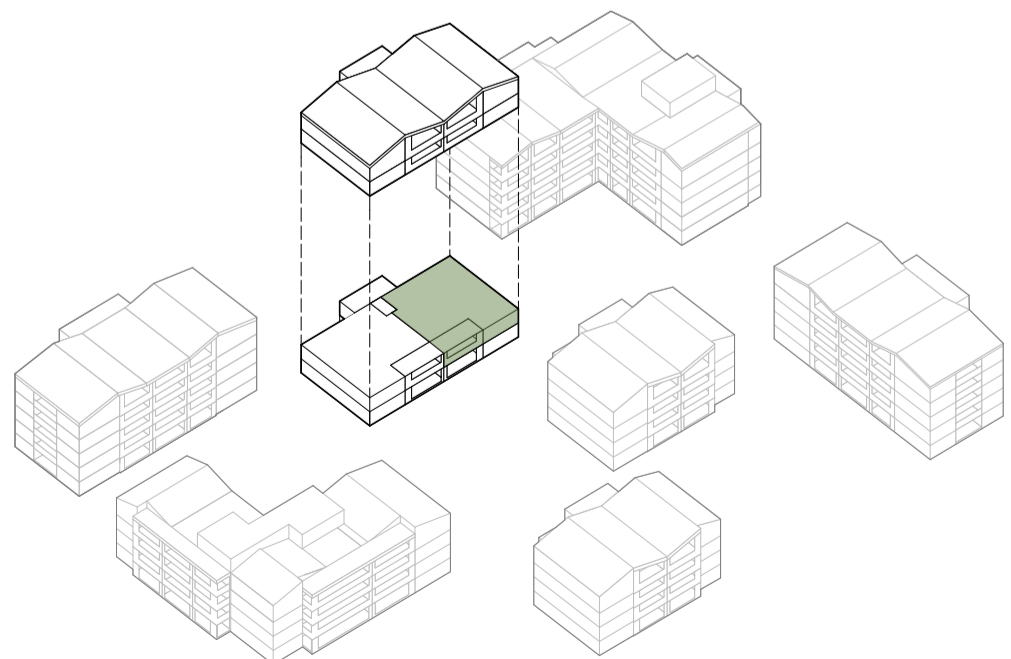
0 1 2 3 4 5m



verschiebbare Elemente

**G.1.2. - 5.5 Zimmer**

Wohnfläche	133.9 m <sup>2</sup>
Balkon	19.7 m <sup>2</sup>
Kellerfläche	7.1 m <sup>2</sup>



Situationsplan

Schematische Darstellung