

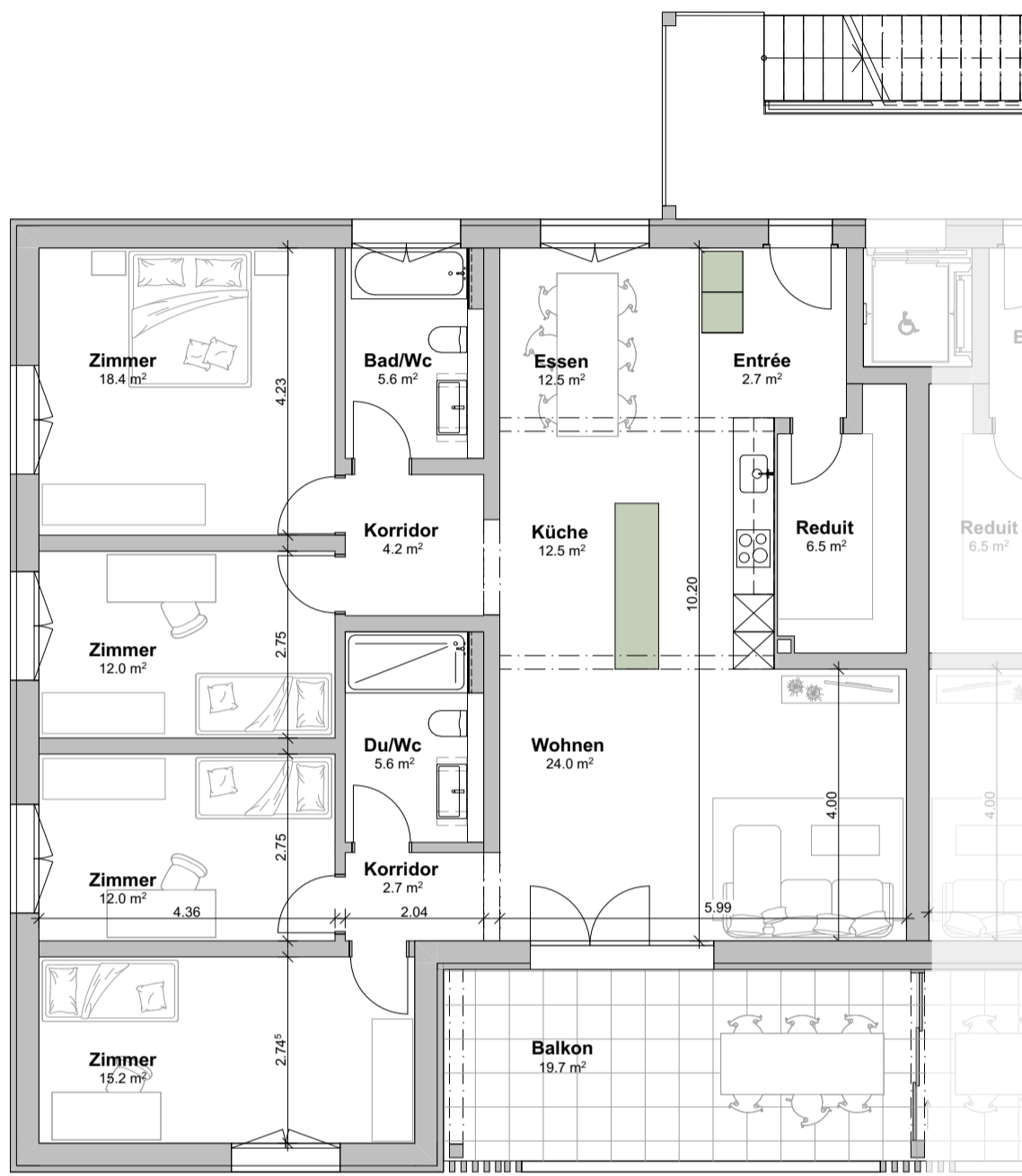
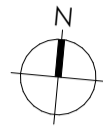
WohnPark Dangelbachmatte, Malters

Wohnungsnummer G.1.1

Geschoss : 1. Obergeschoss

Masstab: 1:100

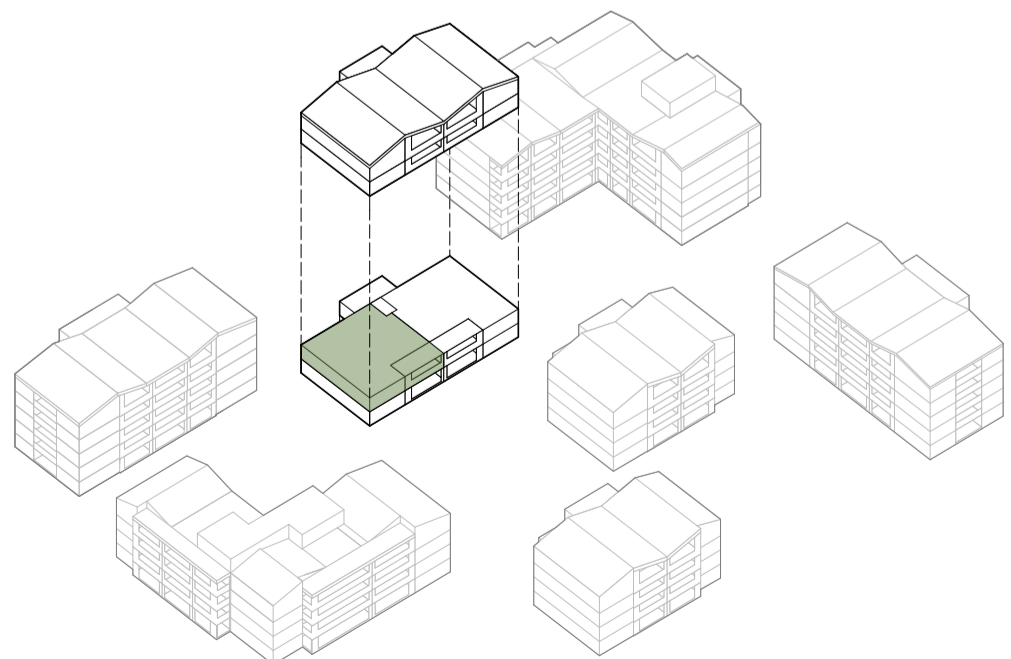
0 1 2 3 4 5m



verschiebbare Elemente

G.1.1. - 5.5 Zimmer

Wohnfläche	133.9 m ²
Balkon	19.7 m ²
Kellerfläche	7.3 m ²



Situationsplan

Schematische Darstellung