

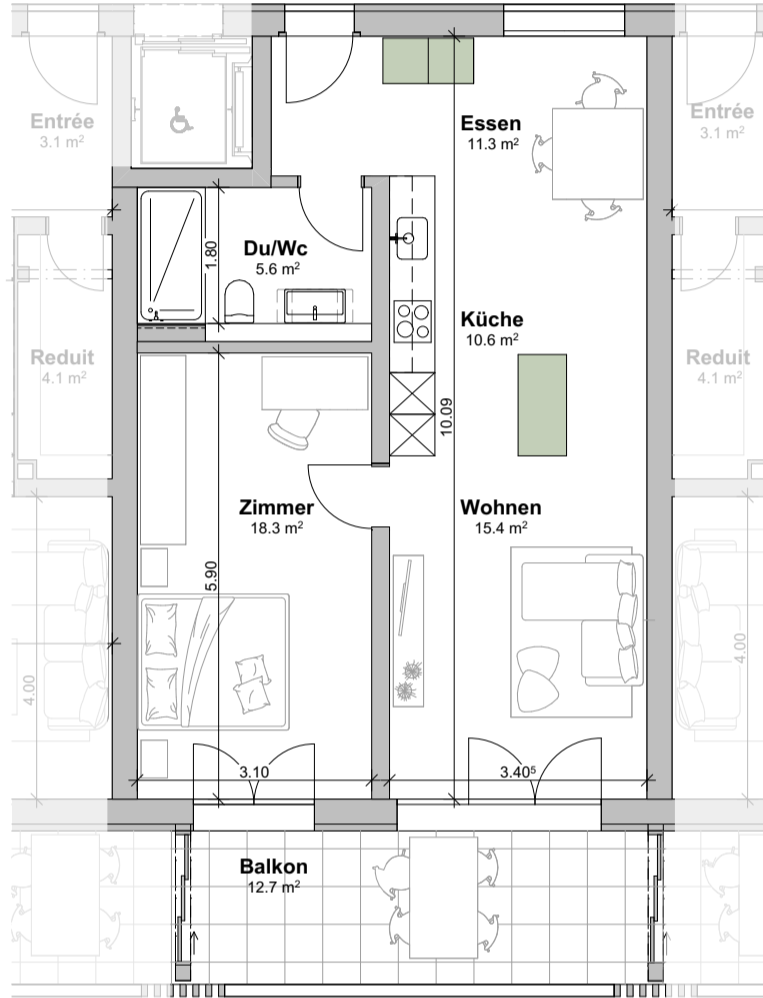
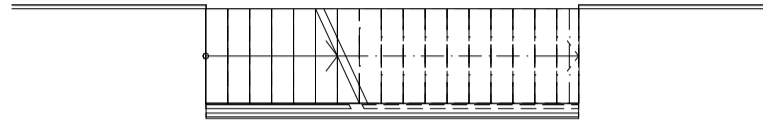
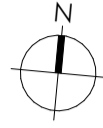
WohnPark Dangelbachmatte, Malters

Wohnungsnummer F.1.2

Geschoss : 1. Obergeschoss

Masstab: 1:100

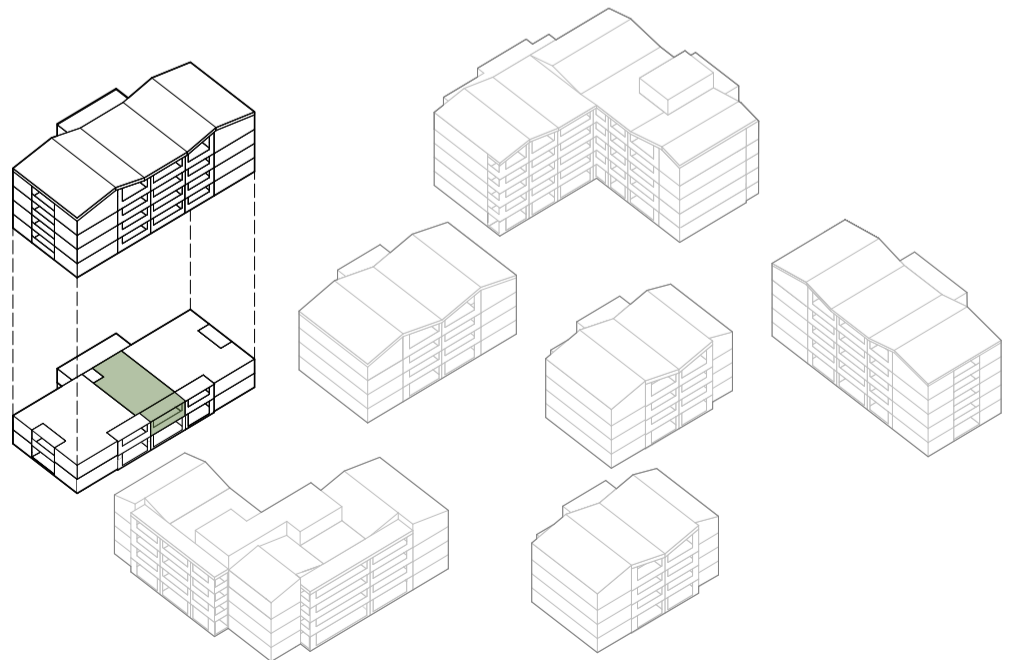
0 1 2 3 4 5m



■ verschiebbare Elemente

F.1.2. - 2.5 Zimmer

Wohnfläche	61.2 m ²
Balkon	12.7 m ²
Kellerfläche	8.2 m ²



Situationsplan

Schematische Darstellung