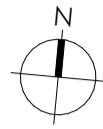


WohnPark Dangelbachmatte, Malters

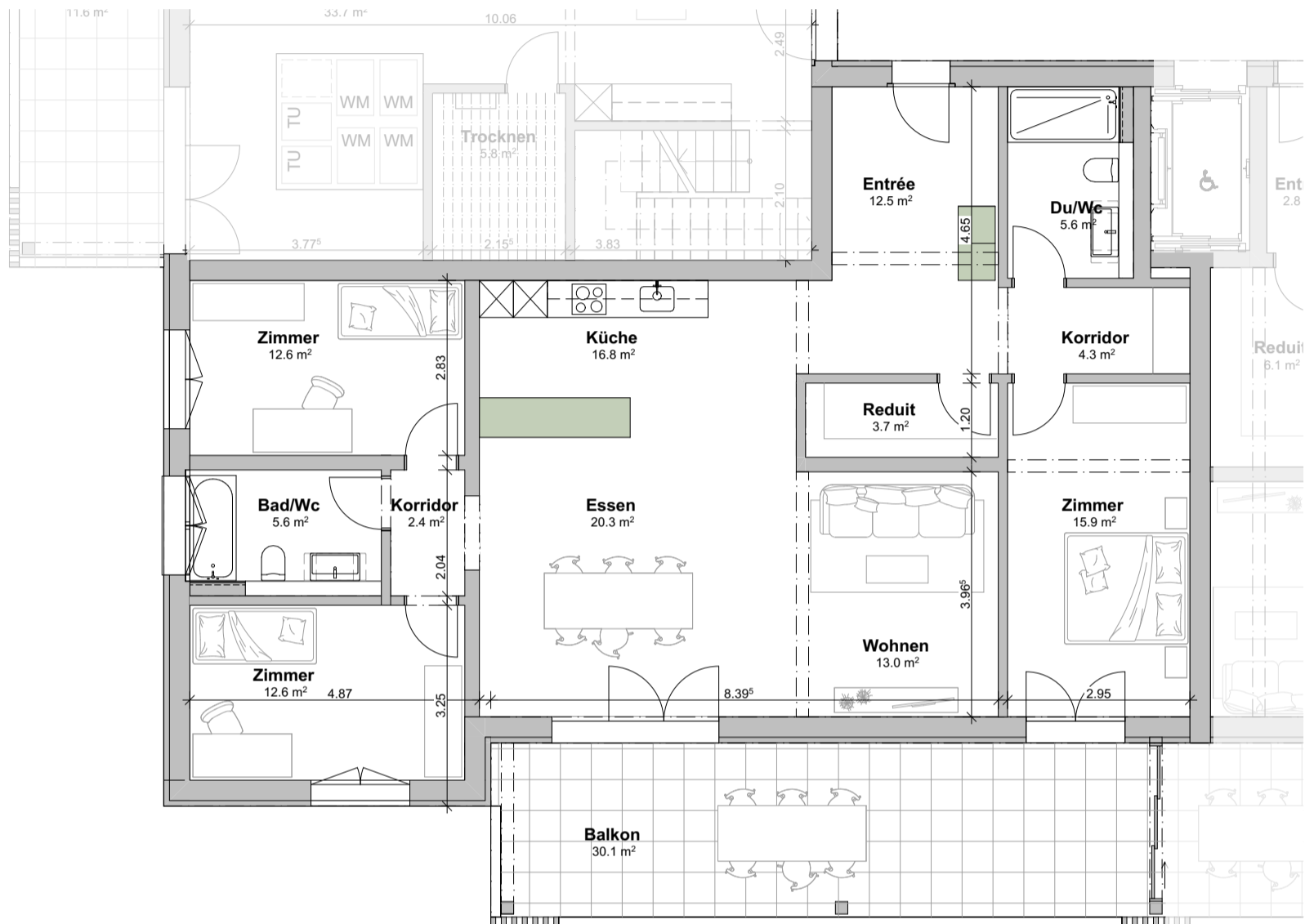
Wohnungsnummer E.3.3

Geschoss : 3.Obergeschoss

Masstab: 1:100



0 1 2 3 4 5m



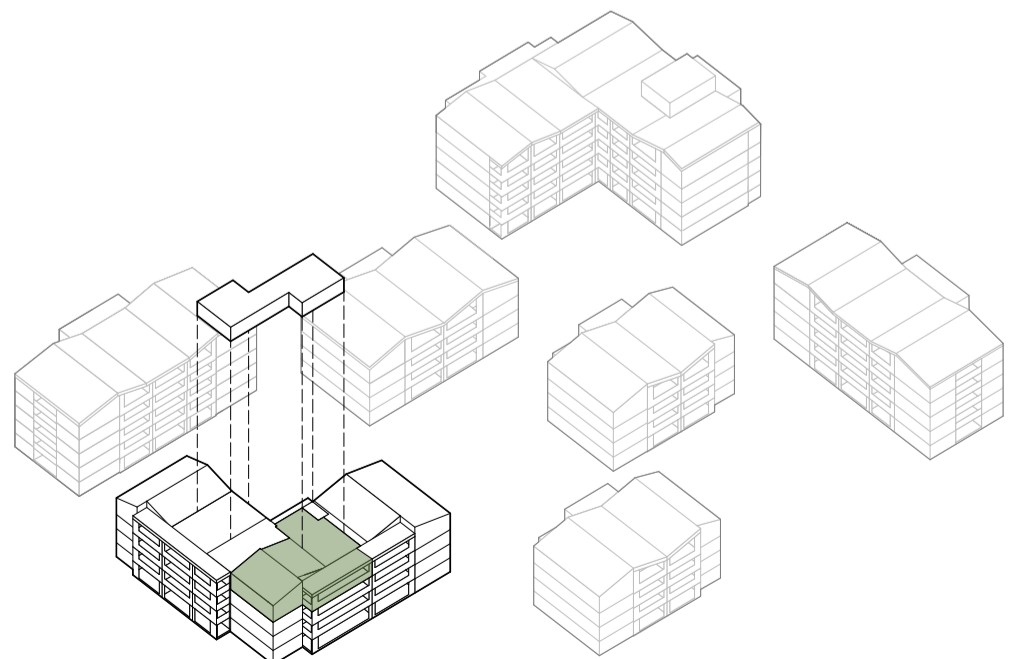
verschiebbare Elemente

**E.3.3. - 4.5 Zimmer**

Wohnfläche	125.3 m <sup>2</sup>
Balkon	30.1 m <sup>2</sup>
Kellerfläche	9.3 m <sup>2</sup>



Situationsplan



Schematische Darstellung