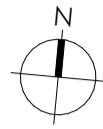


WohnPark Dangelbachmatte, Malters

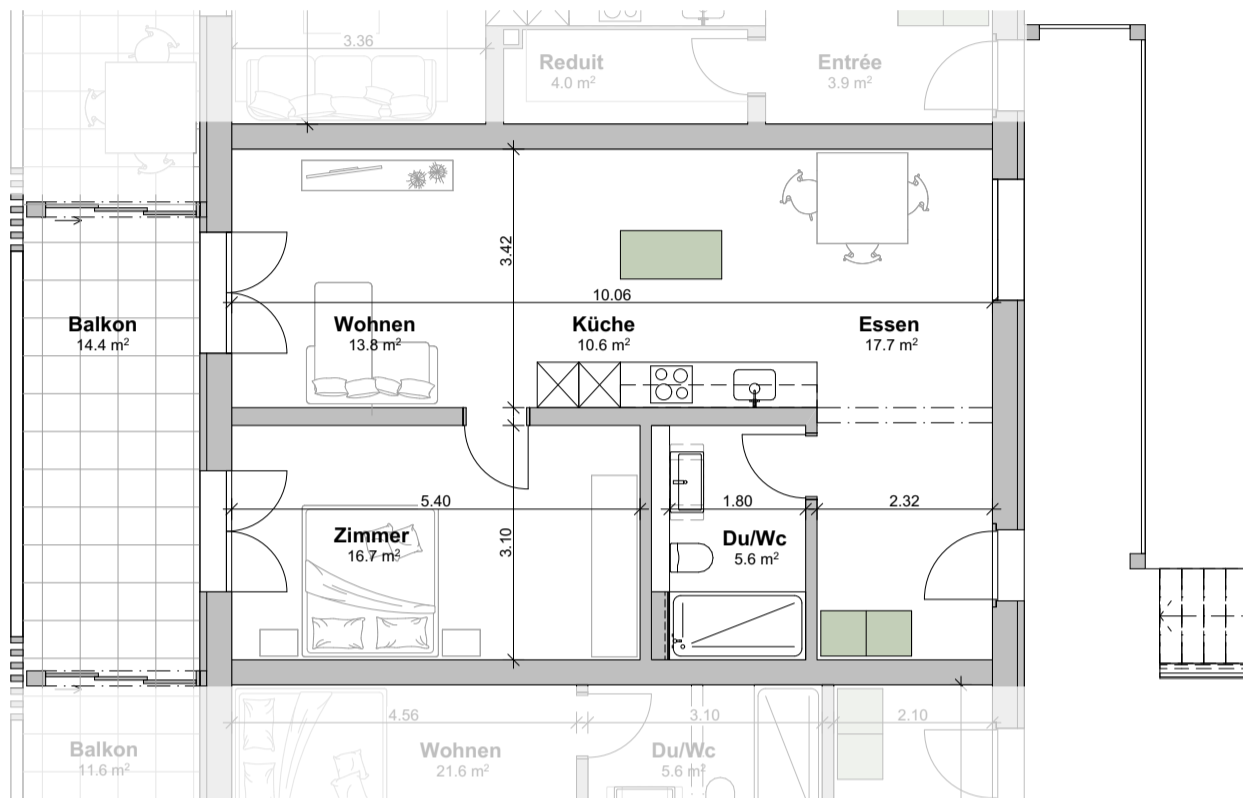
Wohnungsnummer E.2.2

Geschoss : 2. Obergeschoss

Masstab: 1:100



0 1 2 3 4 5m



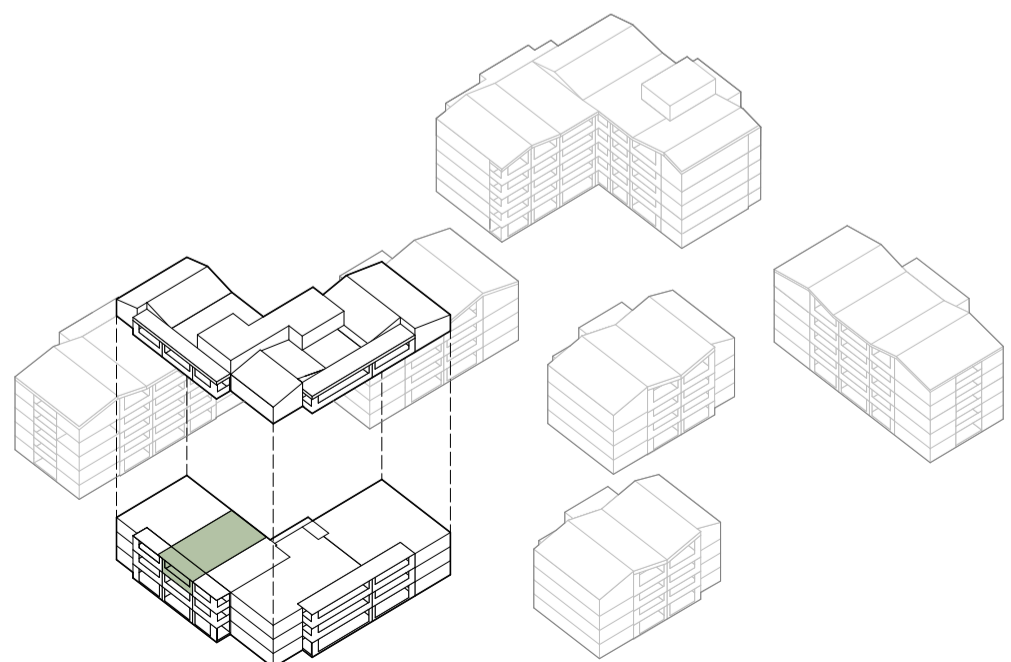
■ verschiebbare Elemente

**E.2.2. - 2.5 Zimmer**

Wohnfläche	64.4 m <sup>2</sup>
Balkon	14.4 m <sup>2</sup>
Kellerfläche	7.0 m <sup>2</sup>



Situationsplan



Schematische Darstellung