

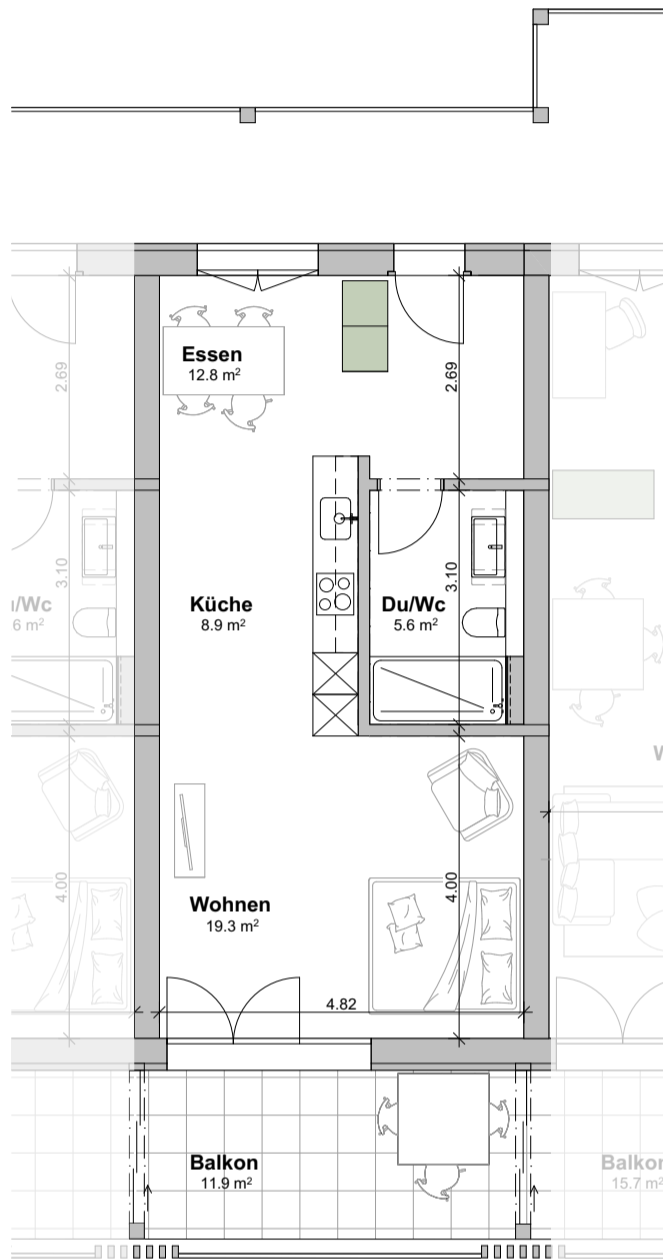
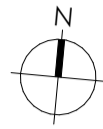
WohnPark Dangelbachmatte, Malters

Wohnungsnummer A.4.2

Geschoss : 4. Obergeschoss

Masstab: 1:100

0 1 2 3 4 5m



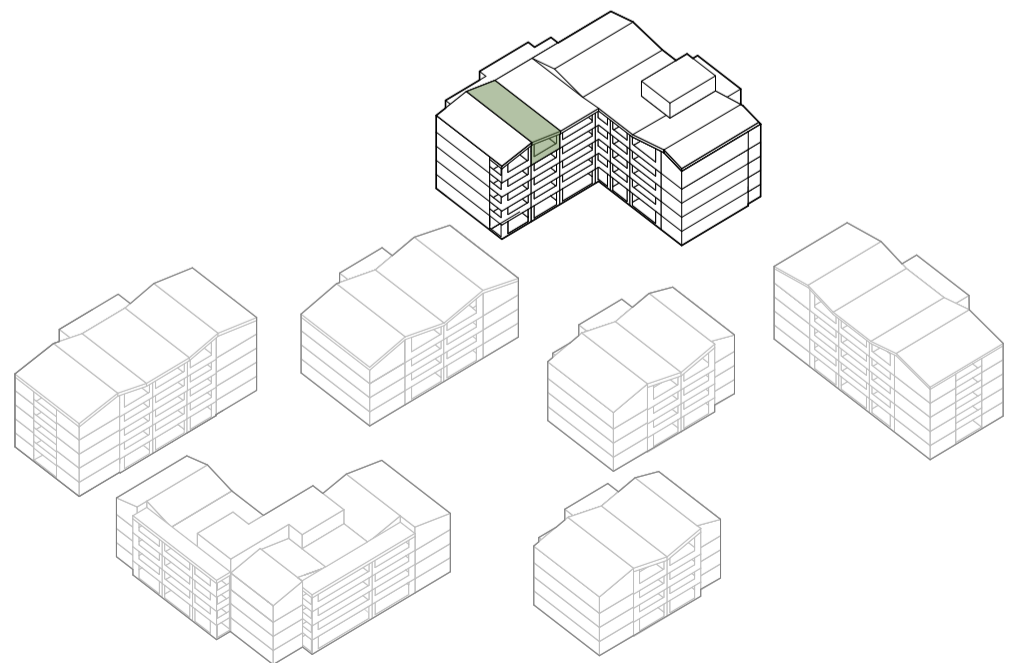
verschiebbare Elemente

**A.4.2. - 1.5 Zimmer**

Wohnfläche	46.6 m <sup>2</sup>
Balkon	11.9 m <sup>2</sup>
Kellerfläche	5.3 m <sup>2</sup>



Situationsplan



Schematische Darstellung