

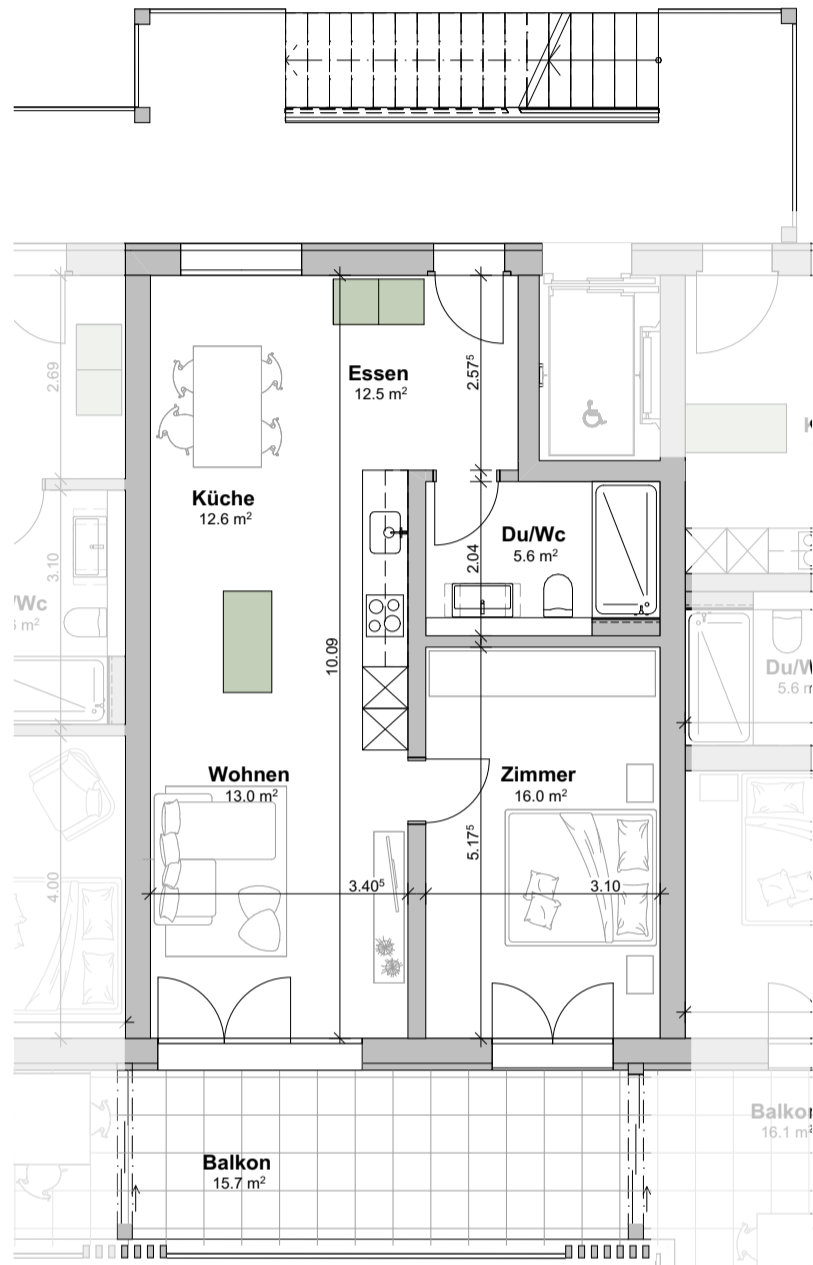
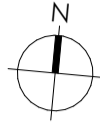
WohnPark Dangelbachmatte, Malters

Wohnungsnummer A.3.3

Geschoss : 3. Obergeschoss

Masstab: 1:100

0 1 2 3 4 5m



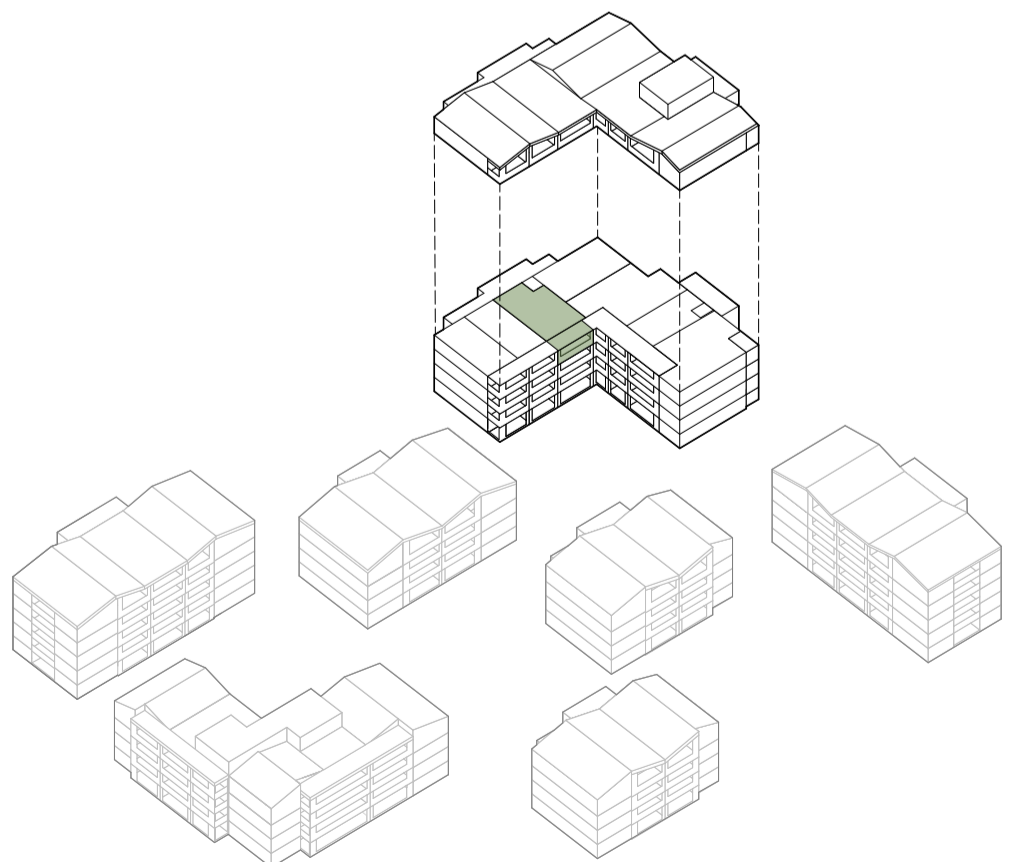
verschiebbare Elemente

A.3.3. - 2.5 Zimmer

| | |
|--------------|---------------------|
| Wohnfläche | 59.7 m ² |
| Balkon | 15.7 m ² |
| Kellerfläche | 5.2 m ² |



Situationsplan



Schematische Darstellung