

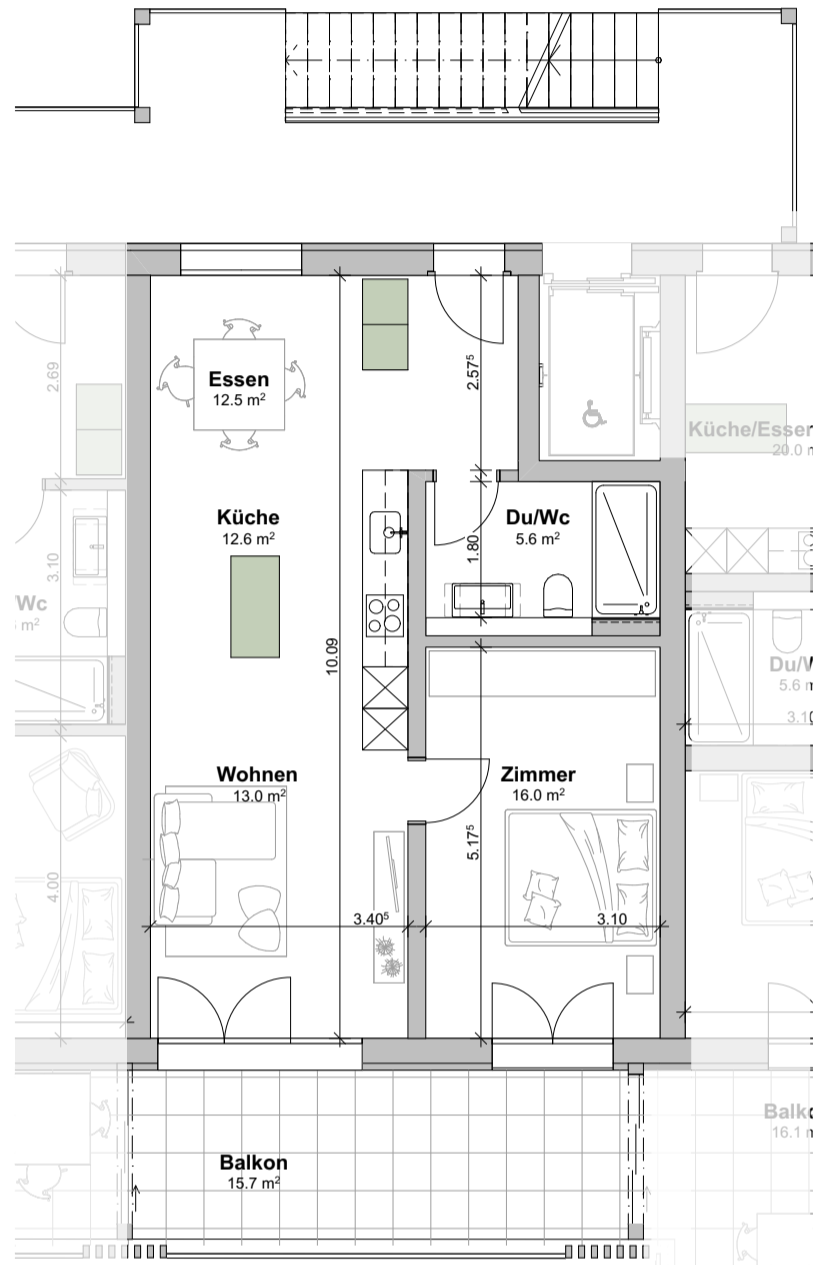
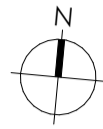
WohnPark Dangelbachmatte, Malters

Wohnungsnummer A.2.3

Geschoss : 2. Obergeschoss

Masstab: 1:100

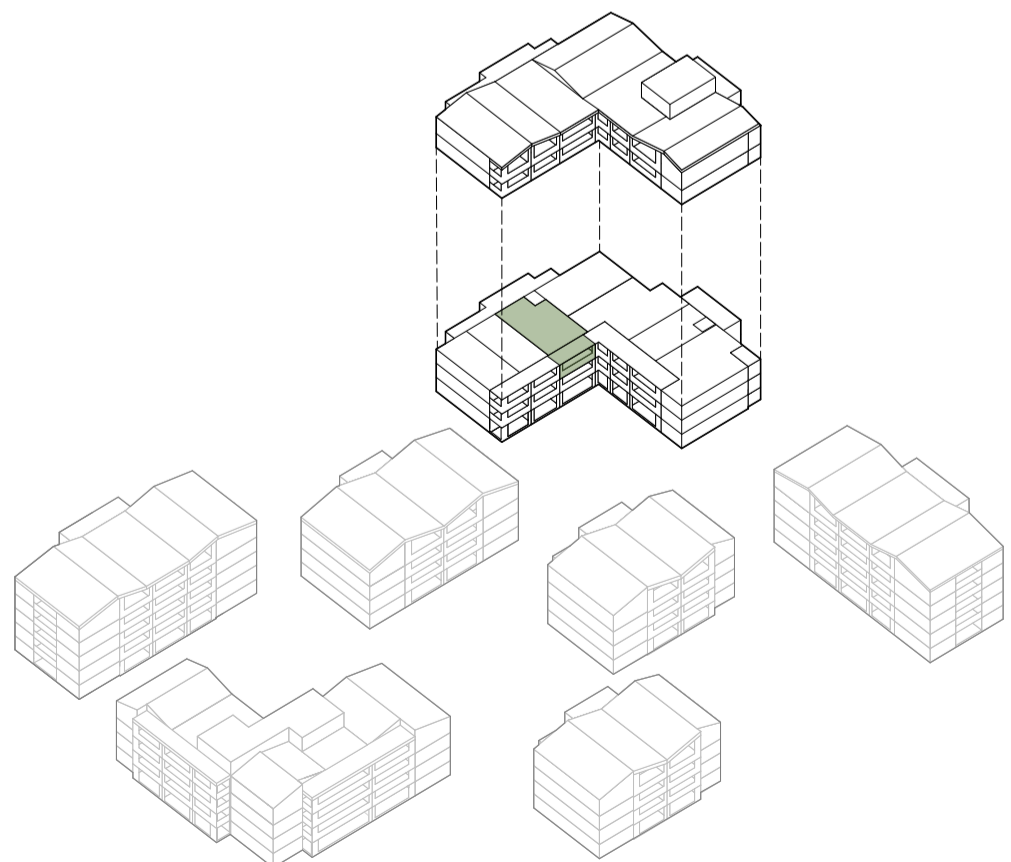
0 1 2 3 4 5m



verschiebbare Elemente

**A.2.3. - 2.5 Zimmer**

Wohnfläche	59.7 m <sup>2</sup>
Balkon	15.7 m <sup>2</sup>
Kellerfläche	5.2 m <sup>2</sup>



Situationsplan

Schematische Darstellung