

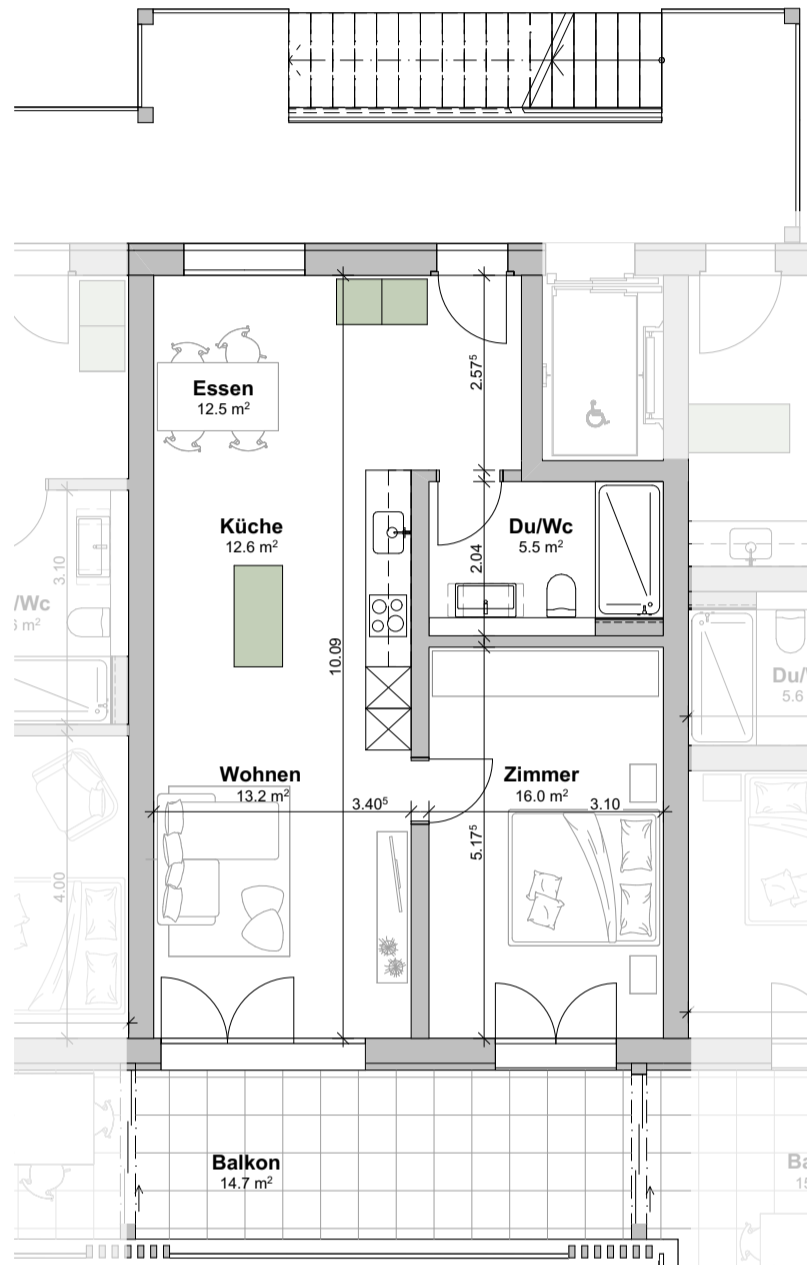
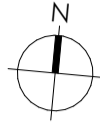
WohnPark Dangelbachmatte, Malters

Wohnungsnummer A.1.3

Geschoss : 1. Obergeschoss

Masstab: 1:100

0 1 2 3 4 5m



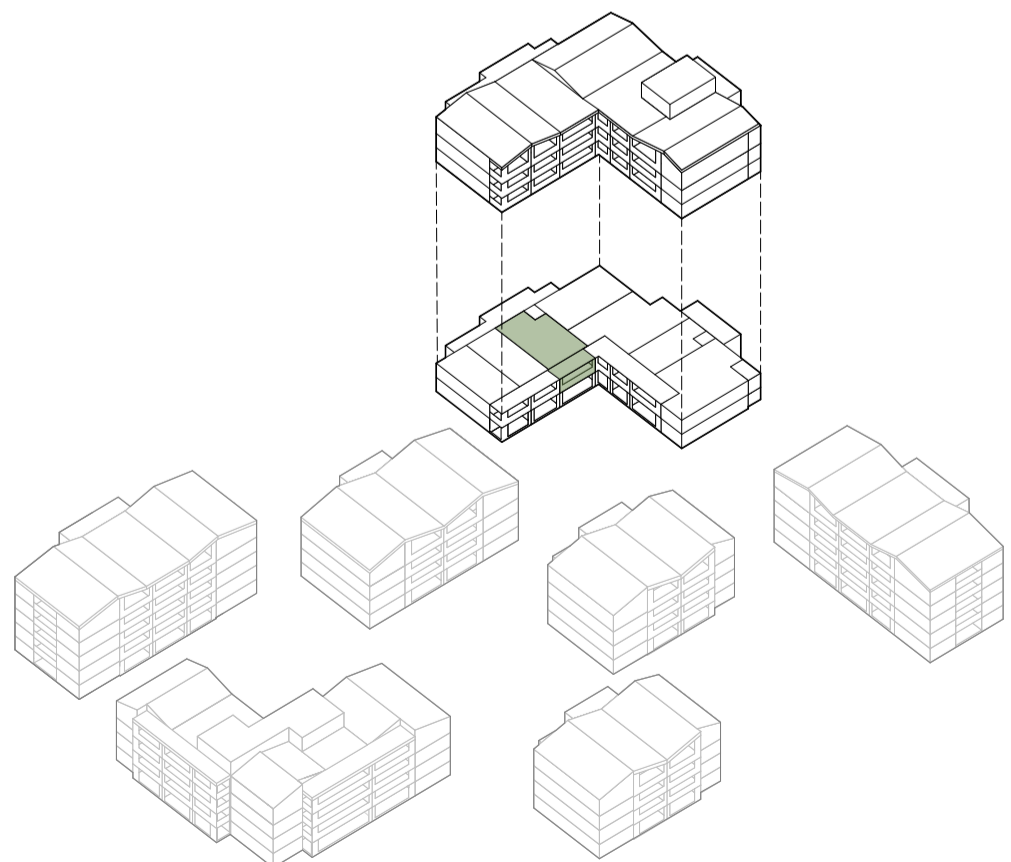
verschiebbare Elemente

A.1.3. - 2.5 Zimmer

Wohnfläche	59.8 m ²
Balkon	14.7 m ²
Kellerfläche	5.3 m ²



Situationsplan



Schematische Darstellung